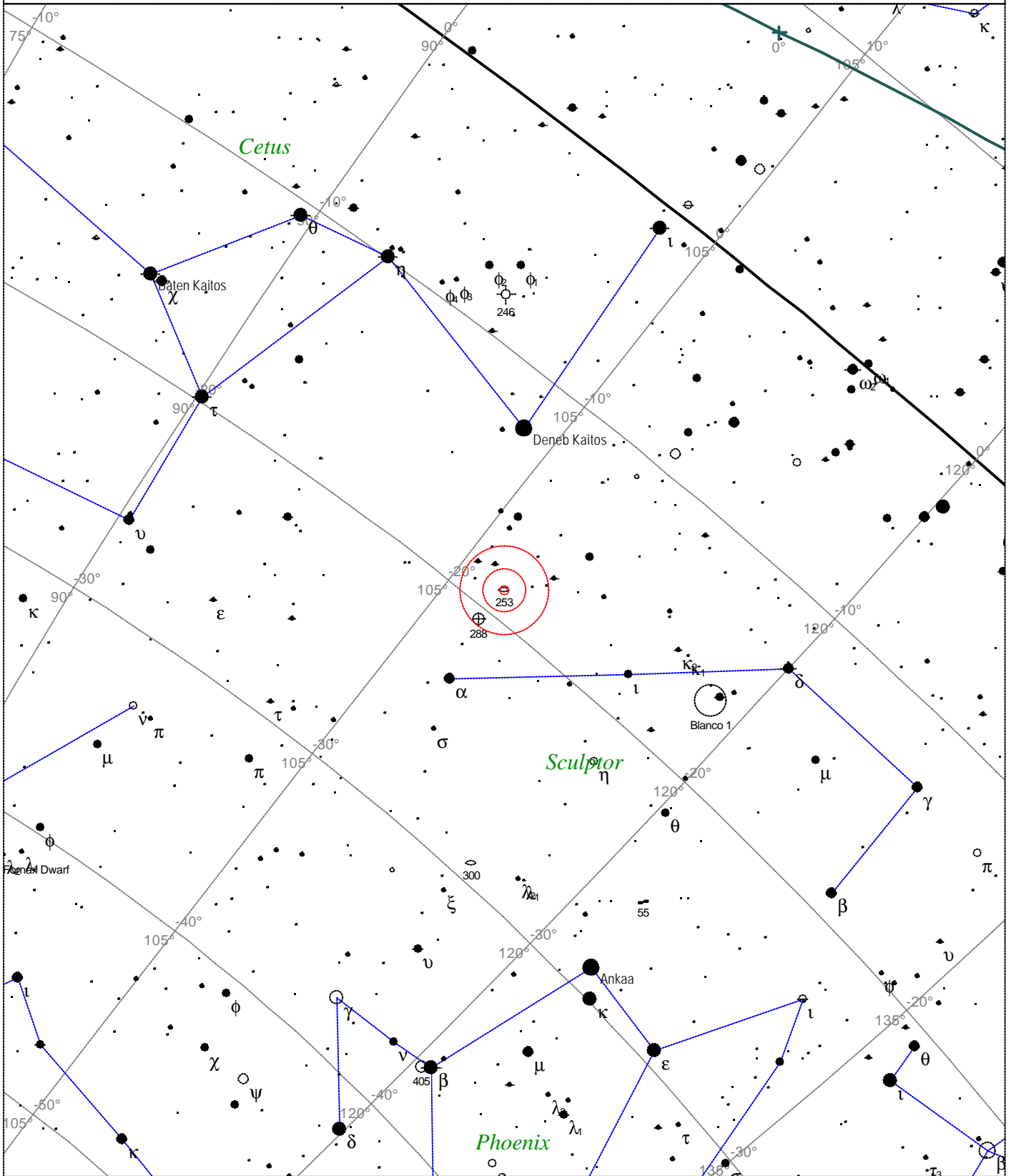


Caldwell 65 - NGC 253



<p>STARS</p> <ul style="list-style-type: none"> ● <3 ● 3.5 ● 4 ● 4.5 ● 5 ● 5.5 	<p>SYMBOLS</p> <ul style="list-style-type: none"> ● Multiple star ○ Variable star ☄ Comet ☉ Galaxy □ Bright nebula ◻ Dark nebula ⊕ Globular cluster ○ Open cluster ♁ Planetary nebula ☄ Quasar △ Radio source ✕ X-ray source ○ Other object 	<p><i>Caldwell 65 - NGC 253</i> Type of object: Galaxy Magnitude: 8.0 Surface brightness: 12.4 mag/sq arcmin Size: 26.4'x6.0' Position angle: 52° Right ascension: 0h 47m 41s Declination: -25° 16' 19"</p>
--	---	--

Local Time: 19:40:11 12-Sep-2002 UTC: 19:40:11 12-Sep-2002 Sidereal Time: 18:56:39
 Location: 53° 27' 0" N 2° 31' 0" W RA: 0h47m41s Dec: -25° 16' Field: 45.0° Julian Day: 2452530.3196