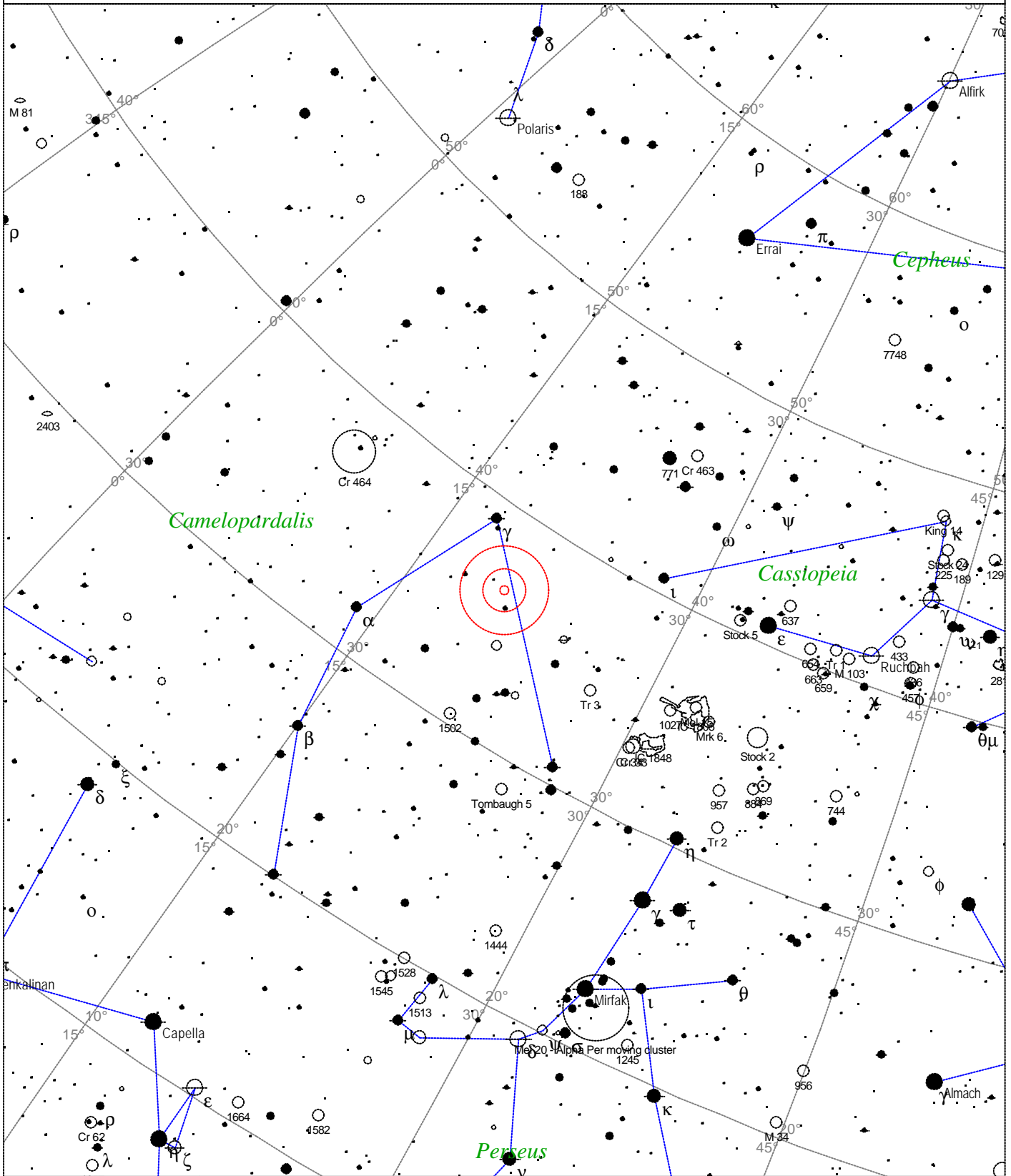


# Caldwell 5 - IC 342



<p><b>STARS</b></p> <ul style="list-style-type: none"> <li>● &lt;3</li> <li>● 3.5</li> <li>● 4</li> <li>● 4.5</li> <li>● 5</li> <li>● 5.5</li> </ul>	<p><b>SYMBOLS</b></p> <ul style="list-style-type: none"> <li>● Multiple star</li> <li>○ Variable star</li> <li>☄ Comet</li> <li>☉ Galaxy</li> <li>□ Bright nebula</li> <li>◻ Dark nebula</li> <li>⊕ Globular cluster</li> <li>○ Open cluster</li> <li>⊕ Planetary nebula</li> <li>⊗ Quasar</li> <li>△ Radio source</li> <li>× X-ray source</li> <li>○ Other object</li> </ul>	<p><i>Caldwell 5 - IC 342</i>                  Type of object: <i>Galaxy</i>                  Magnitude: 9.1                  Surface brightness: 15.7 mag/sq arcmin                  Size: 20.9'x20.4'                  Right ascension: 3h 47m 3s                  Declination: +68° 5' 58"                  Constellation: <i>Camelopardalis</i></p>
--	---	---

Local Time: 19:40:11 12-Sep-2002	UTC: 19:40:11 12-Sep-2002	Sidereal Time: 18:56:39
Location: 53° 27' 0" N 2° 31' 0" W	RA: 3h47m03s Dec: +68° 05' Field: 45.0°	Julian Day: 2452530.3196