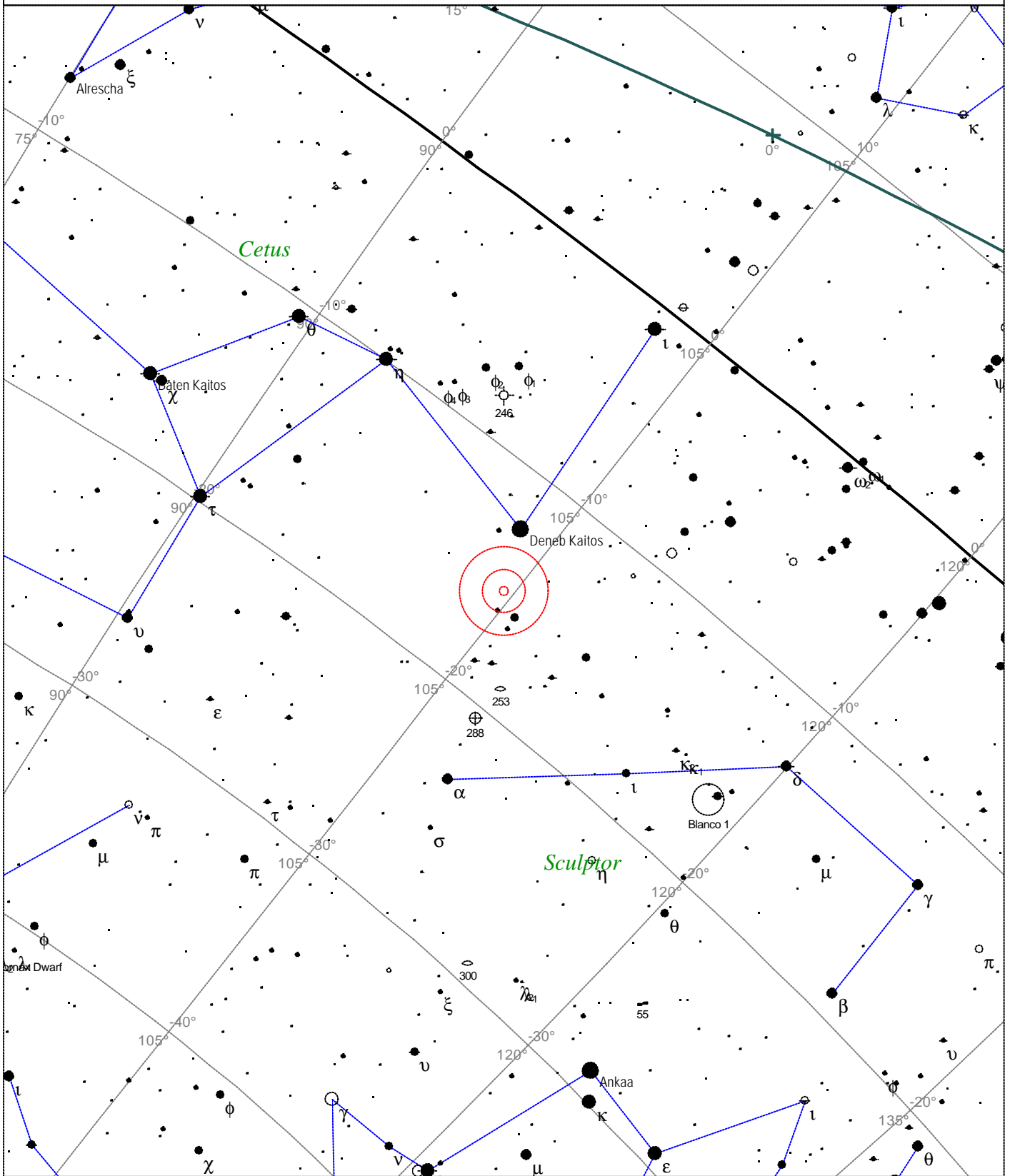


# Caldwell 62 - NGC 247



<p><b>STARS</b></p> <ul style="list-style-type: none"> <li>● &lt;3</li> <li>● 3.5</li> <li>● 4</li> <li>● 4.5</li> <li>● 5</li> <li>● 5.5</li> </ul>	<p><b>SYMBOLS</b></p> <ul style="list-style-type: none"> <li>● Multiple star</li> <li>○ Variable star</li> <li>☄ Comet</li> <li>☉ Galaxy</li> <li>□ Bright nebula</li> <li>□ Dark nebula</li> <li>⊕ Globular cluster</li> <li>○ Open cluster</li> <li>⊕ Planetary nebula</li> <li>⊗ Quasar</li> <li>△ Radio source</li> <li>× X-ray source</li> <li>○ Other object</li> </ul>	<p><i>Caldwell 62 - NGC 247</i>              Type of object: Galaxy              Magnitude: 9.6              Surface brightness: 14.0 mag/sq arcmin              Size: 21.0'x5.6'              Position angle: 174°              Right ascension: 0h 47m 17s              Declination: -20° 44' 41"</p>
--	---	---

Local Time: 19:40:11 12-Sep-2002      UTC: 19:40:11 12-Sep-2002      Sidereal Time: 18:56:39  
 Location: 53° 27' 0" N 2° 31' 0" W      RA: 0h47m17s Dec: -20° 44' Field: 45.0°      Julian Day: 2452530.3196