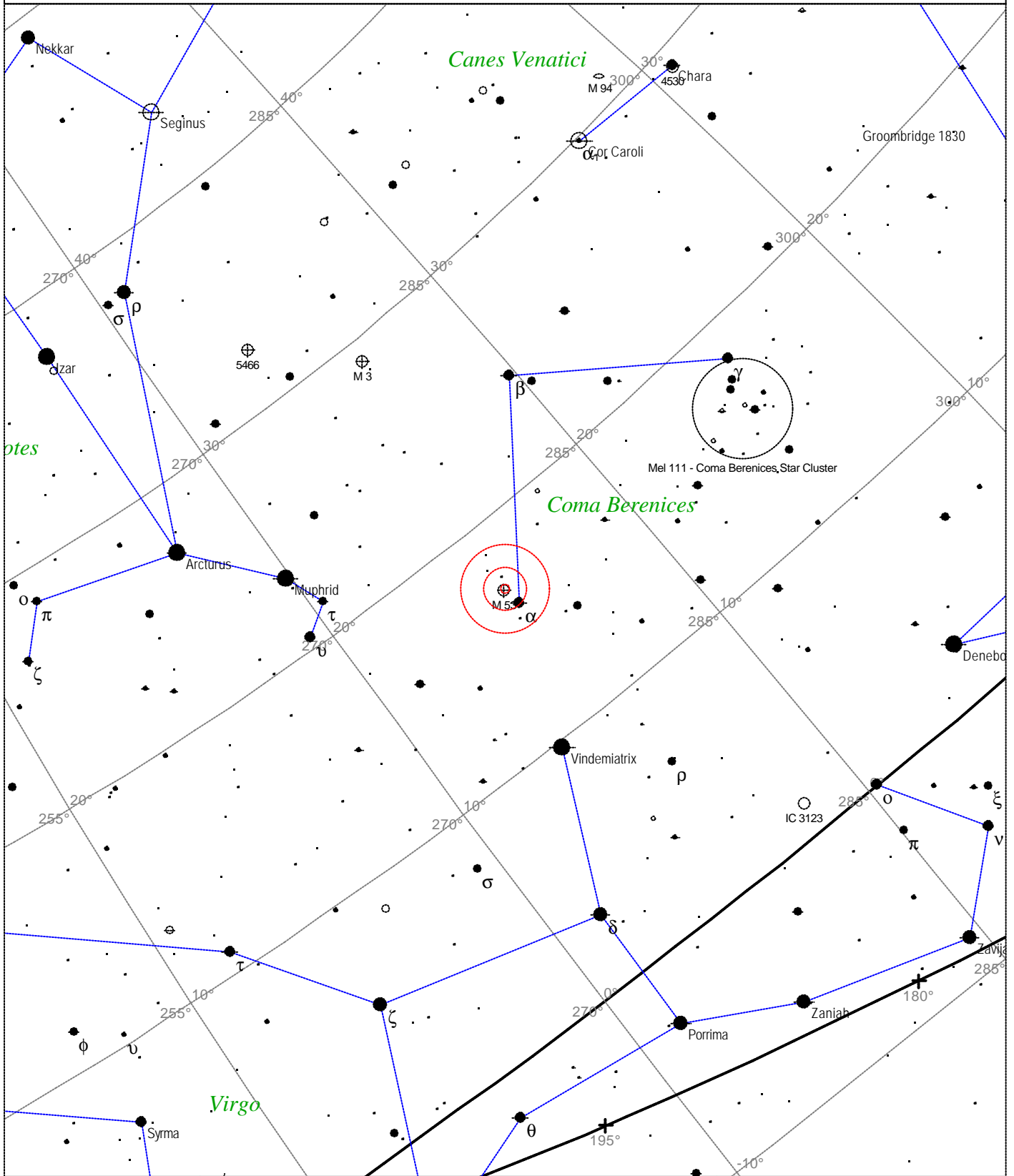


# Messier 53 - Globular Cluster



STARS		SYMBOLS			<i>Messier 53 - Globular cluster</i> Magnitude: 7.6 Size: 14.4' Right ascension: 13h 13m 1s Declination: +18° 9' 33" Constellation: Coma Berenices
● <3	· 6	● Multiple star	◻ Dark nebula	△ Radio source	
● 3.5	· >6.5	○ Variable star	⊕ Globular cluster	× X-ray source	
● 4		☄ Comet	○ Open cluster	○ Other object	
● 4.5		☾ Galaxy	♁ Planetary nebula		
● 5		◻ Bright nebula	☉ Quasar		
● 5.5					

Local Time: 19:40:11 12-Sep-2002  
 Location: 53° 27' 0" N 2° 31' 0" W

UTC: 19:40:11 12-Sep-2002  
 RA: 13h13m01s Dec: +18° 09' Field: 45.0°

Sidereal Time: 18:56:39  
 Julian Day: 2452530.3196