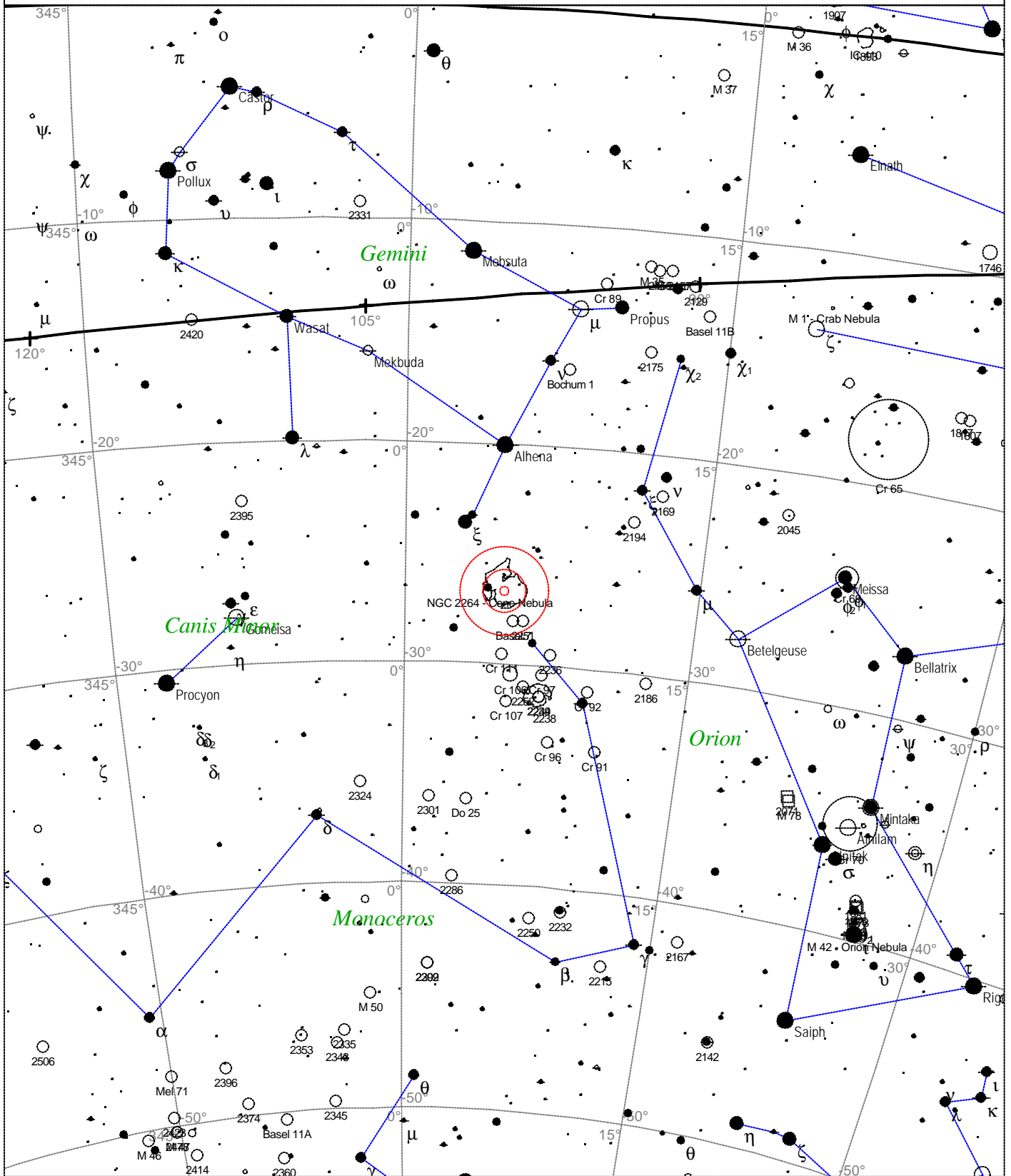


# NGC 2264 - Cone Nebula



<p><b>STARS</b></p> <ul style="list-style-type: none"> <li>● &lt;3</li> <li>● 3.5</li> <li>● 4</li> <li>● 4.5</li> <li>● 5</li> <li>● 5.5</li> </ul>	<p><b>SYMBOLS</b></p> <ul style="list-style-type: none"> <li>● Multiple star</li> <li>○ Variable star</li> <li>☄ Comet</li> <li>☾ Galaxy</li> <li>□ Bright nebula</li> <li>□ Dark nebula</li> <li>⊕ Globular cluster</li> <li>○ Open cluster</li> <li>⊕ Planetary nebula</li> <li>⊗ Quasar</li> <li>△ Radio source</li> <li>× X-ray source</li> <li>○ Other object</li> </ul>	<p>NGC 2264 - Cone Nebula                  Type of object: Open cluster                  Magnitude: 3.9                  Size: 20.0'                  Right ascension: 6h 41m 6s                  Declination: +9° 53' 44"                  Constellation: Monoceros</p>
--	---	--

Local Time: 19:40:11 12-Sep-2002  
 Location: 53° 27' 0" N 2° 31' 0" W

UTC: 19:40:11 12-Sep-2002  
 RA: 6h38m21s Dec: +9° 46' Field: 45.0°

Sidereal Time: 18:56:39  
 Julian Day: 2452530.3196